

AUSTIN TRANSIT PARTNERSHIP LIGHT RAIL FACT SHEET

MARCH 2023



Artist Conceptual Rendering

WHAT IS LIGHT RAIL?

Light rail is an electric train system used in metropolitan areas. Light rail trains can travel at street level, on elevated structures or underground.

The “light” in light rail refers to its smaller size, compared to larger trains which ride on more traditional tracks, such as Austin’s existing Red Line commuter rail. Light rail is part of the overall transit network, connecting people to key destinations where they live, work and play.

WHO IS AUSTIN TRANSIT PARTNERSHIP?

The Austin Transit Partnership (ATP) was officially created by the City of Austin and CapMetro in December 2020 as the independent entity accountable and responsible for the financing, design, construction and overall implementation of Project Connect. ATP’s charge is to deliver on the voters’ transit vision in partnership with the community — and in a way that embeds equity, sustainability and transparency as overarching priorities. ATP is driven by data, which includes community input, and is committed to meeting voters’ goals and honoring Austin’s values.

ATP IS COMMITTED TO:

- Delivering Austin’s first light rail project
- Conducting research to bring light rail options to the public
- Evaluating your feedback and incorporating it into the light rail program
- Prioritizing equity, sustainability and transparency
- Meeting voters’ goals and honoring Austin’s values

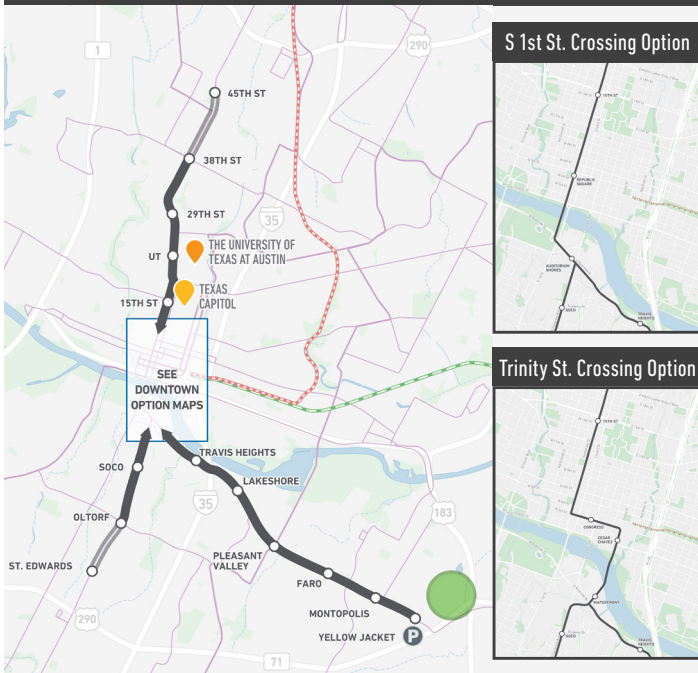


Austin Transit Partnership Staff

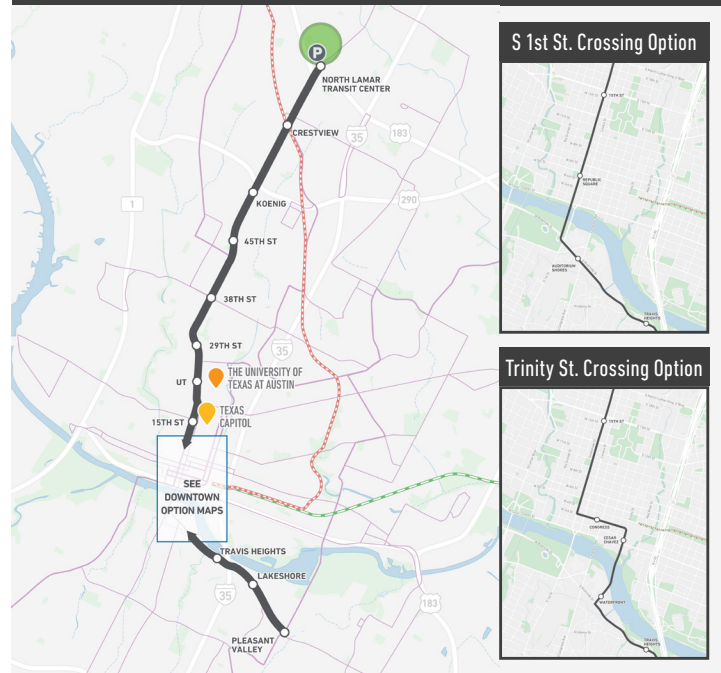


UPDATED LIGHT RAIL OPTIONS FOR PUBLIC CONSIDERATION & FEEDBACK

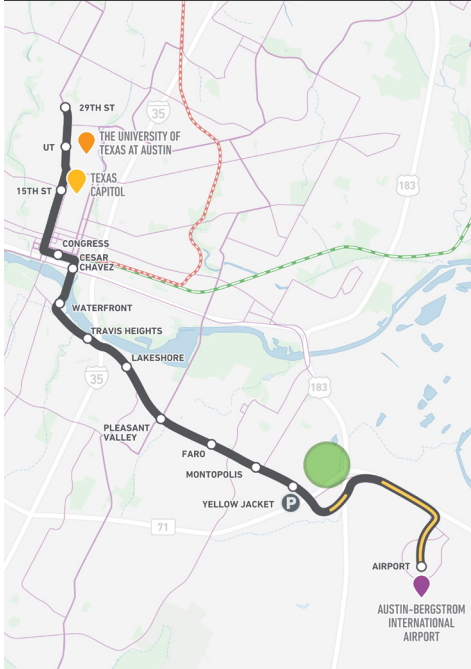
On-street: 38th to Oltorf to Yellow Jacket



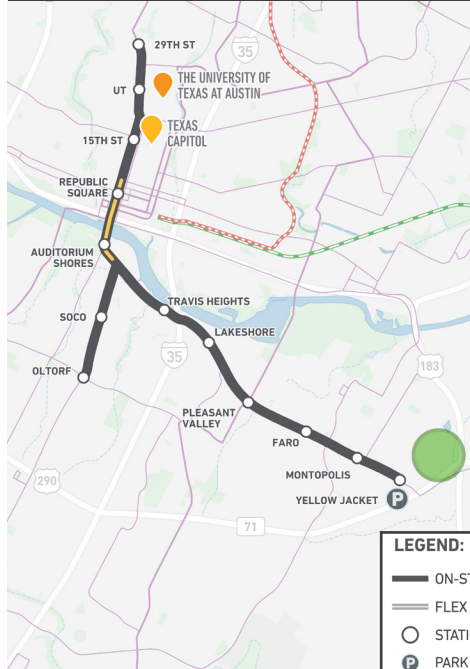
On-street: North Lamar to Pleasant Valley



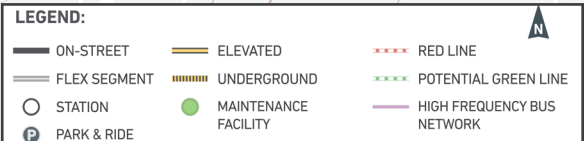
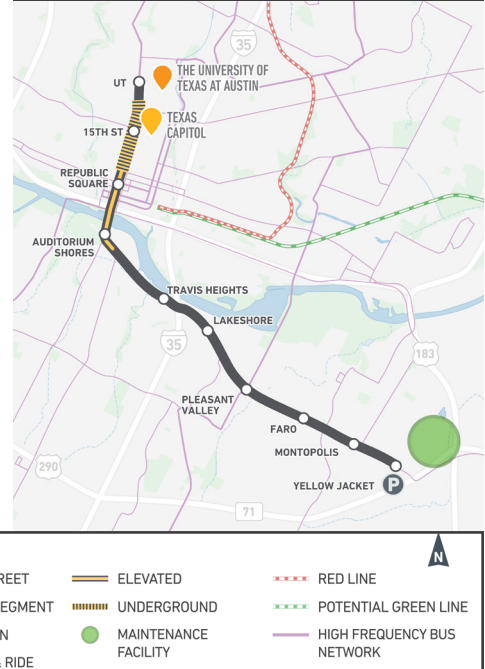
On-Street: 29th to Airport



Partial Elevated: 29th to Oltorf to Yellow Jacket



Partial Underground: UT to Yellow Jacket



Don't forget to share your thoughts on these light rail options by visiting projectconnect.com/GetInvolved or scanning the QR code