

Equitable Transit-Oriented Development (ETOD)

Community Advisory Committee
Thursday, March 10th, 2022



ETOD Corridor Study Area

2020 FTA Grant

13 Stations

\$900,000

2021 FTA Grant

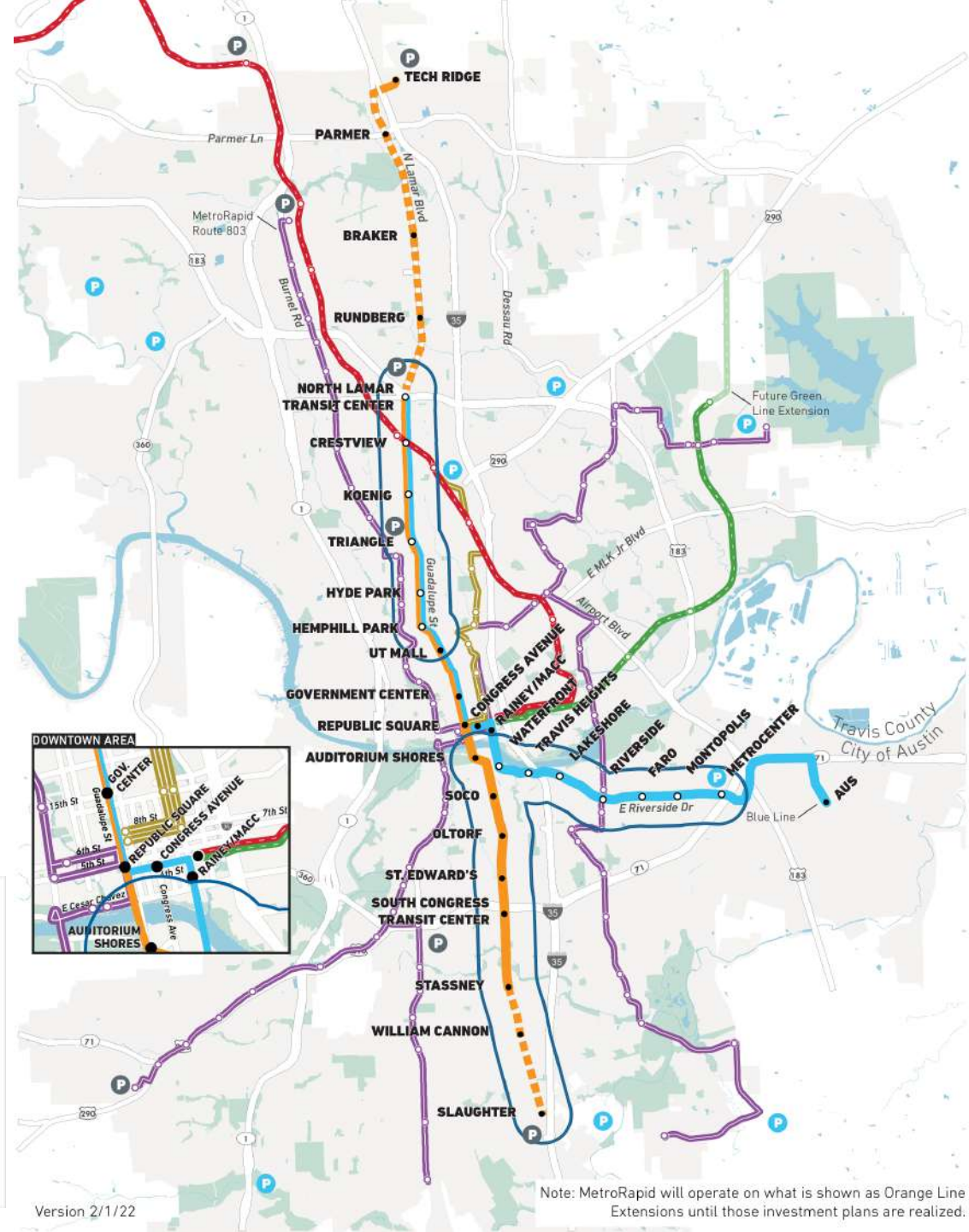
8 Stations

\$750,000

Total

21 stations

\$1.65 million



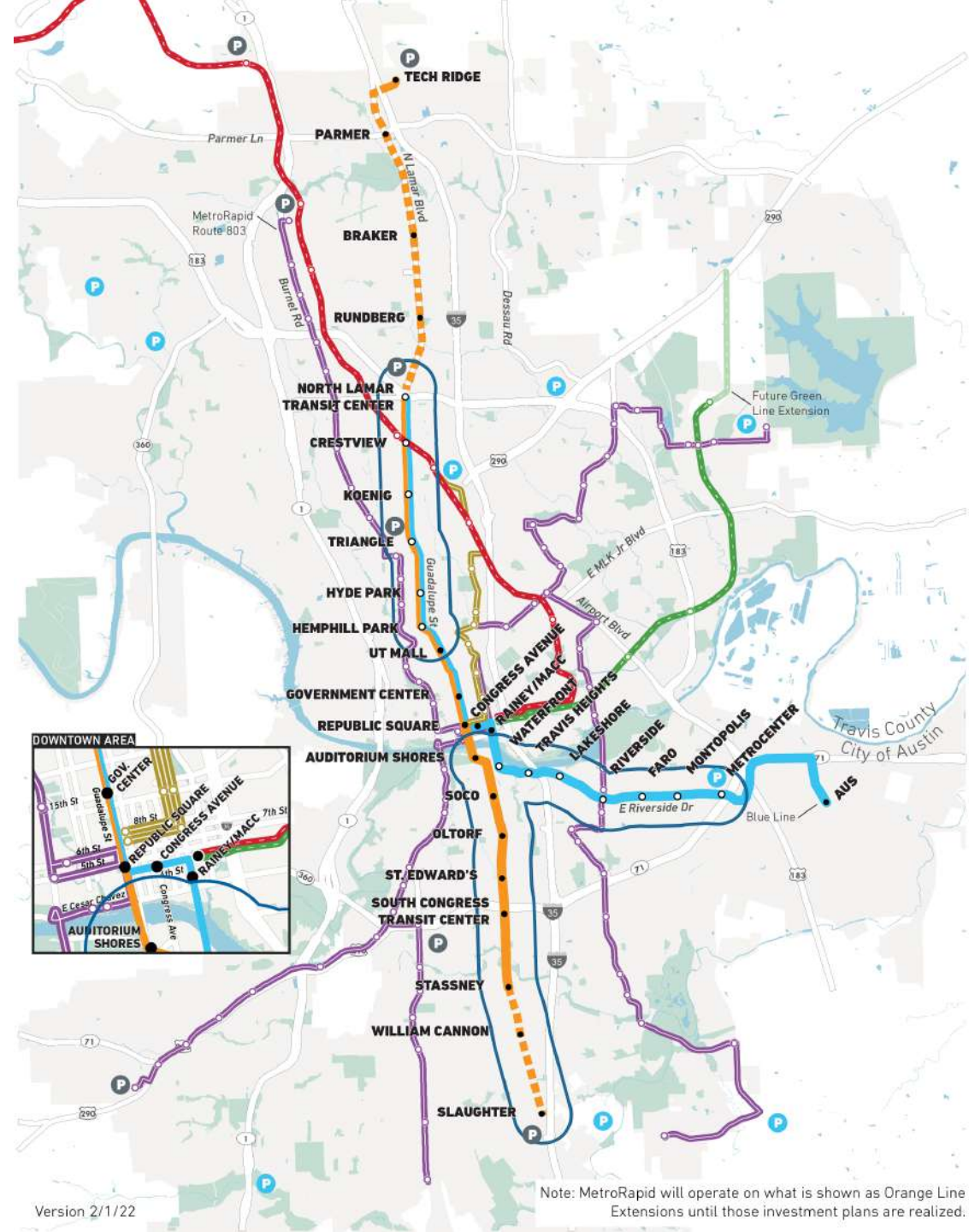
Version 2/1/22

Note: MetroRapid will operate on what is shown as Orange Line Extensions until those investment plans are realized.

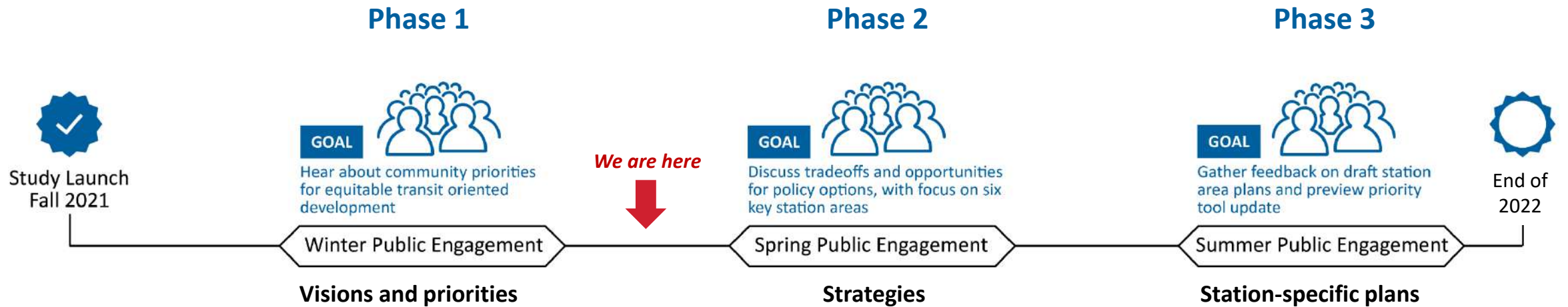
Focus Stations

Stations are selected by joint approach between community feedback, CAC working group input and technical analysis

1. North Lamar Transit Station
2. Crestview
3. Hyde Park
4. South Congress Transit Center
5. East Riverside Corridor Plan Update



Engagement Phases



Phase I – Engagement Touchpoints



Community Presentation

Kickoff
Nov 16/17, 2021

157 Participants



CAC Briefings

Monthly



Online Survey

212 Responses



Focus Groups & One-on-ones

4 One-on-One Discussions
10 Focus Groups Session
(3 in Spanish)

51 Participants



Stakeholder Presentations

20+ Commission briefings



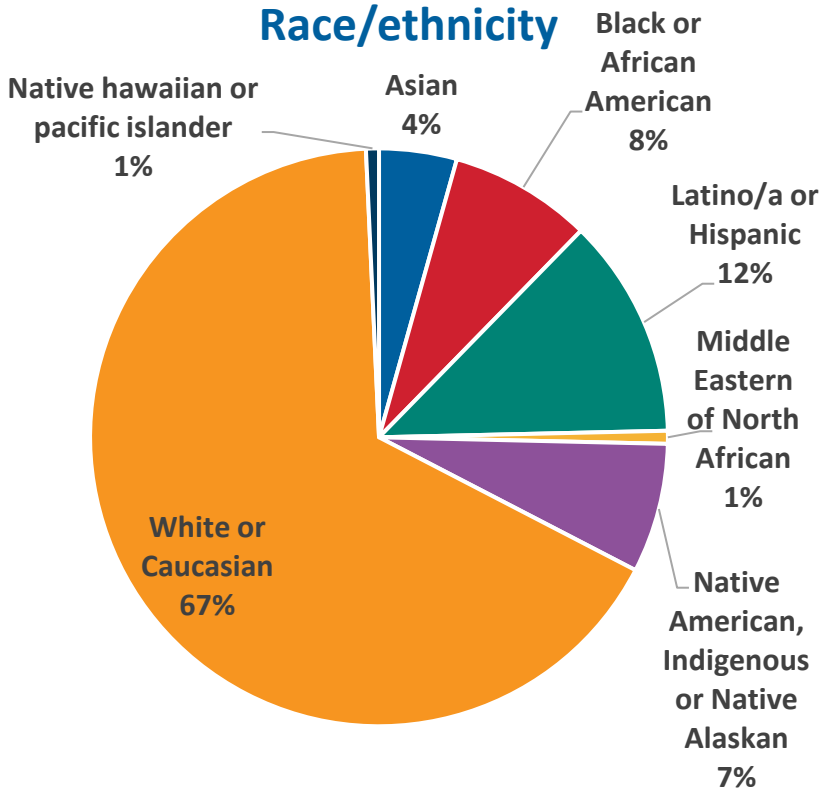
Community Connectors

+140 Applicants
24 Finalists Interviewed

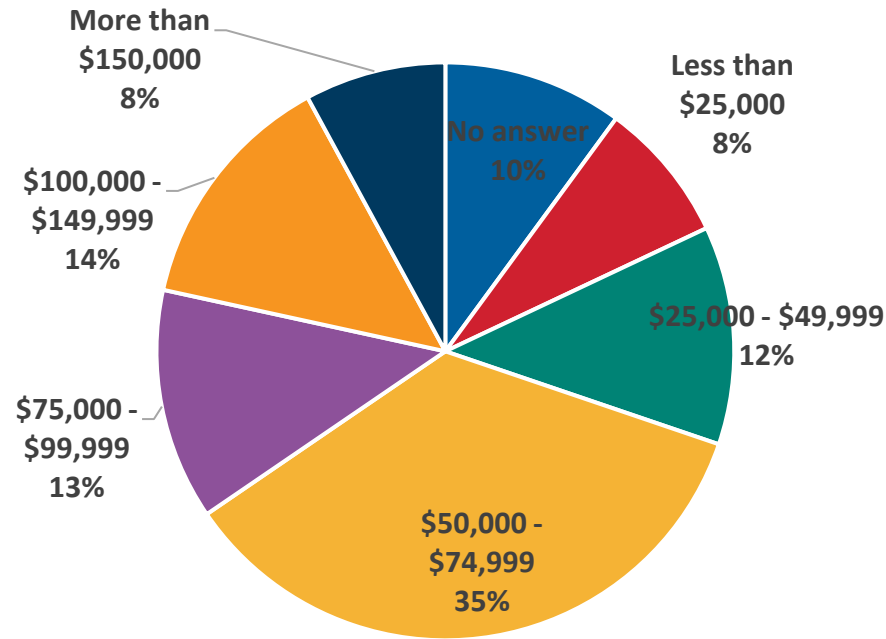
12 Selected

Demographics of Survey Respondents

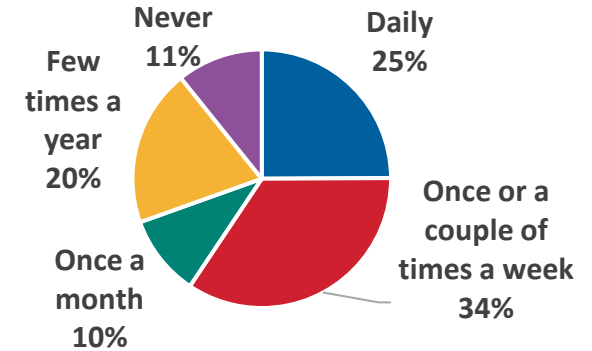
Race/ethnicity



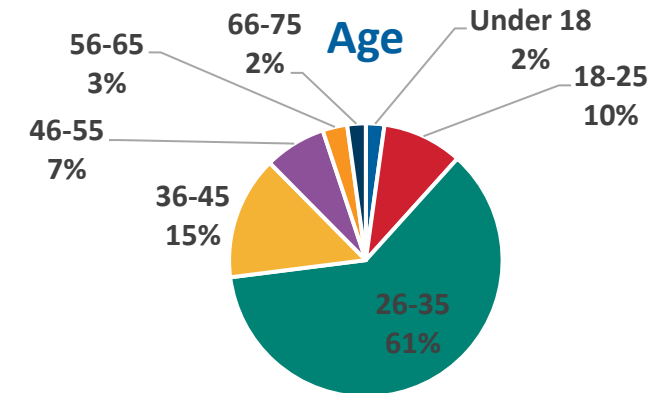
Household Income



Transit Use Frequency

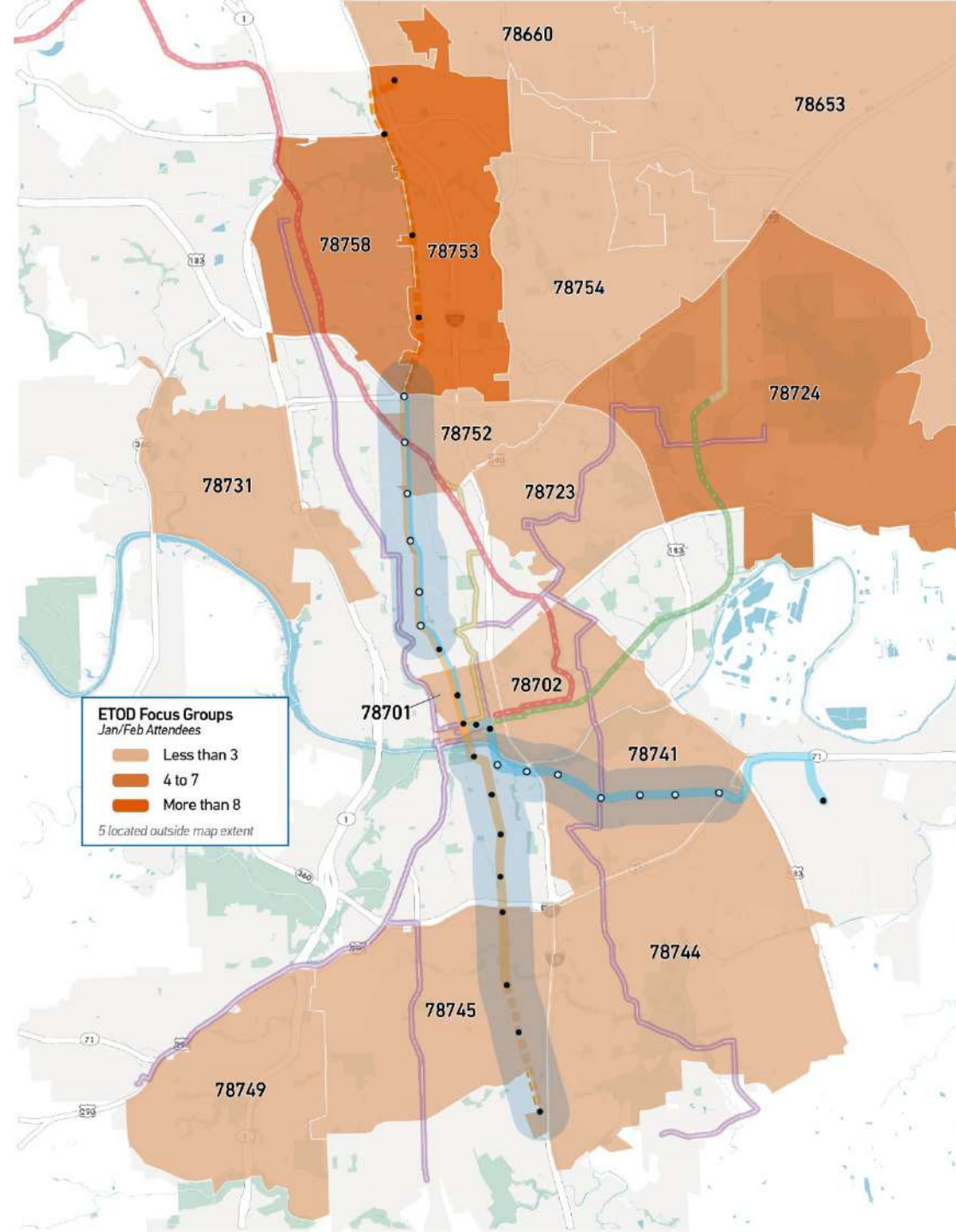


Age



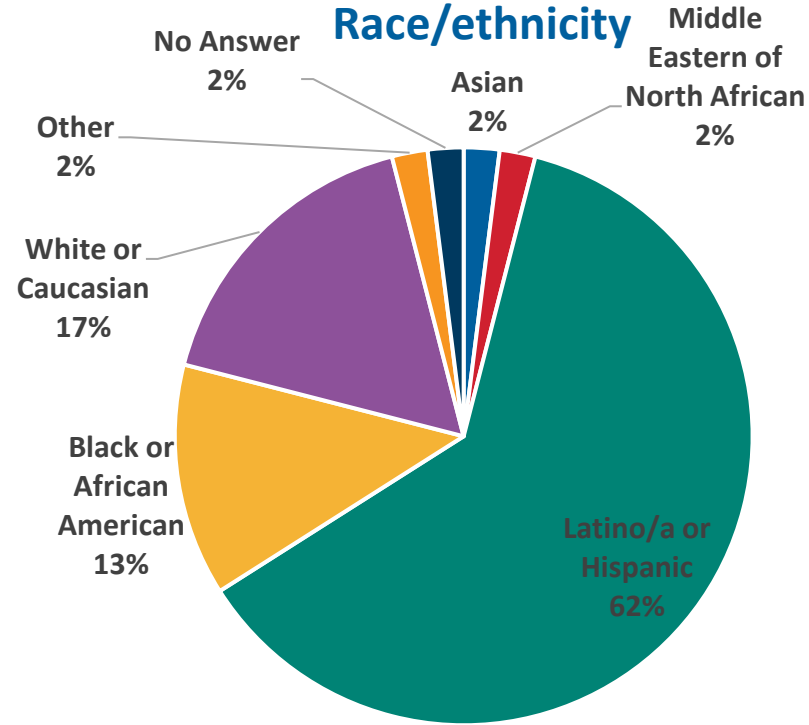
Focus Groups

- Participants based on shared interests or geographic criteria, representing priority stakeholder groups.
 - Share information about ETOD and on the process and vision of the study.
 - Gain insight on the participants' concerns and needs for open spaces, pedestrian infrastructure, employment, housing options, and transit access among other topics
-
- **10 Focus Groups**
 - **3 Spanish**
 - **1 Access**
 - **50+ participants**
 - **Compensated discussion**

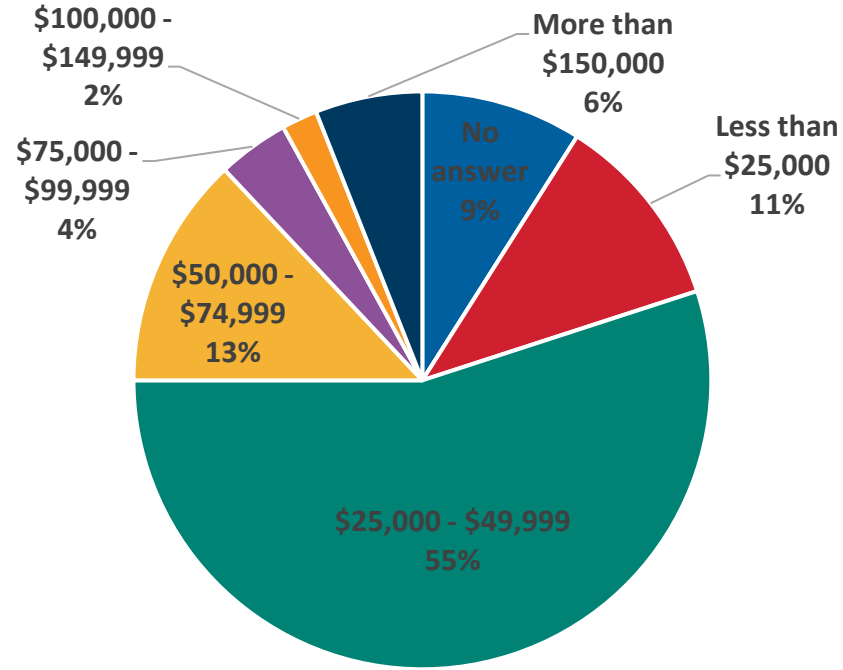


Demographics of Focus Groups Participants

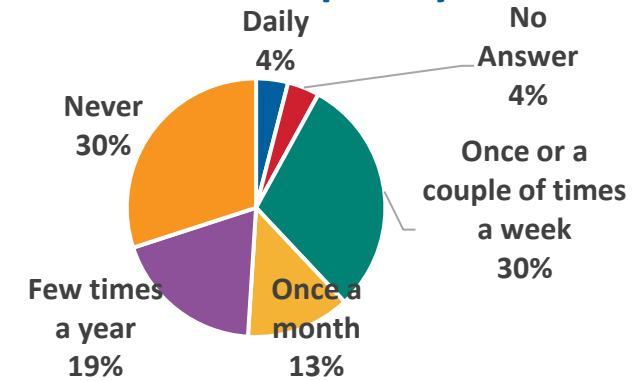
Race/ethnicity



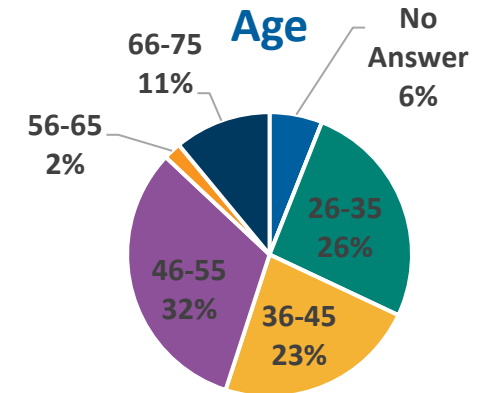
Household Income



Transit Use Frequency

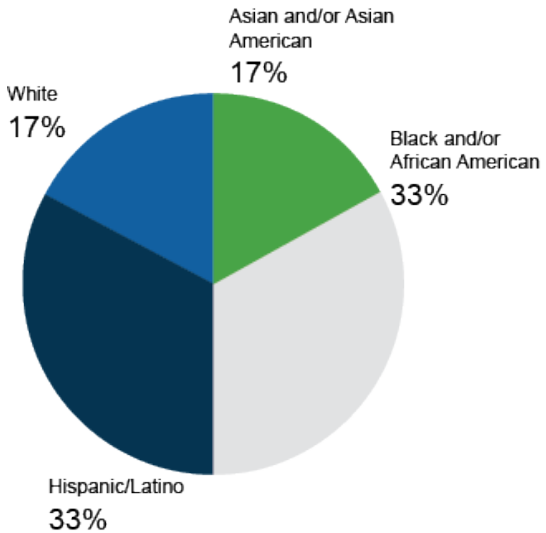


Age

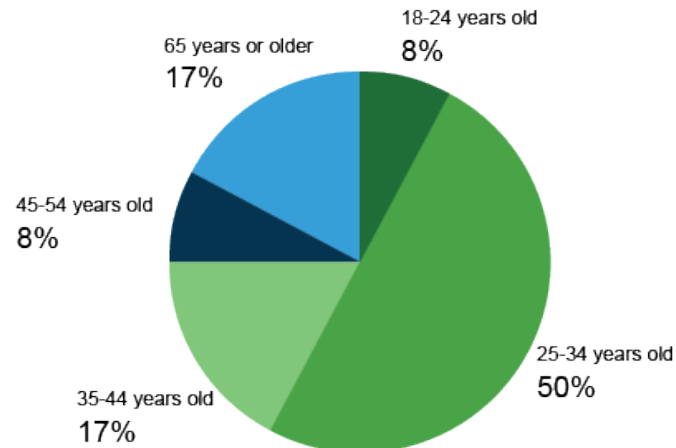


Demographics of Community Connectors (12 Selected)

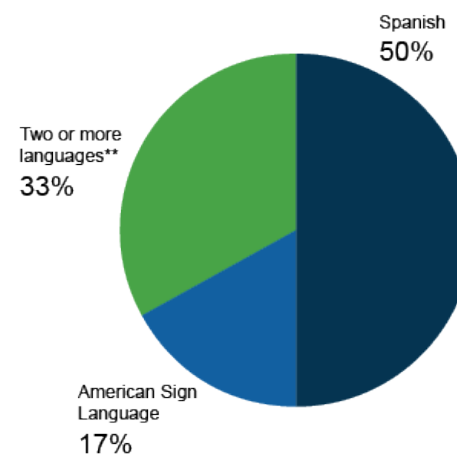
Race / Ethnicity



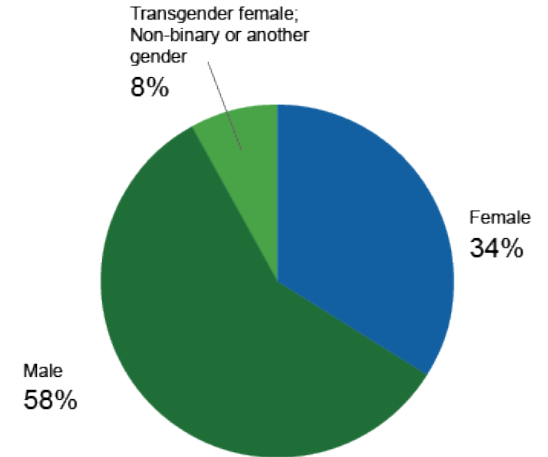
Age



Other languages spoken
(conversational or better)*



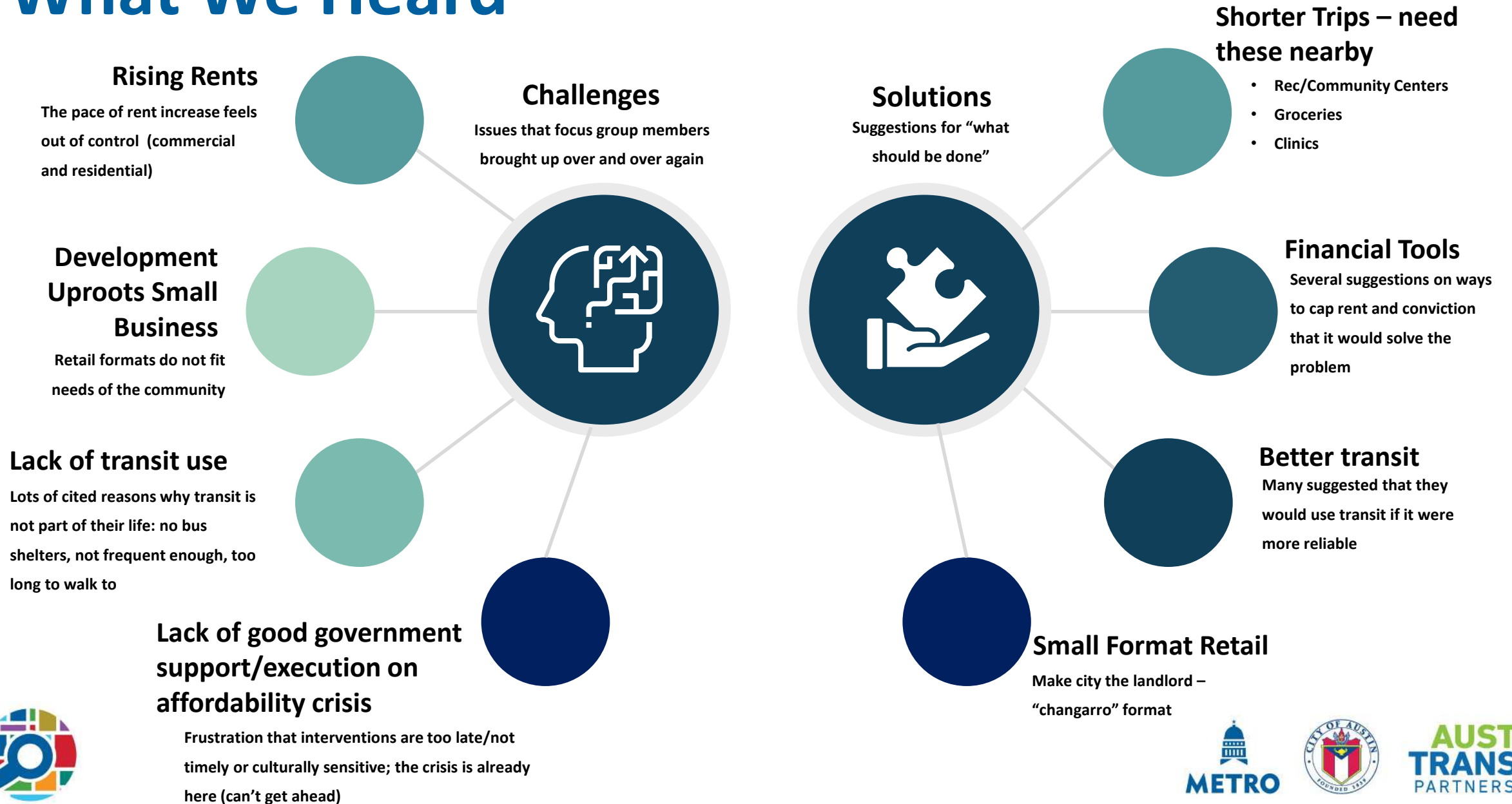
Gender identity



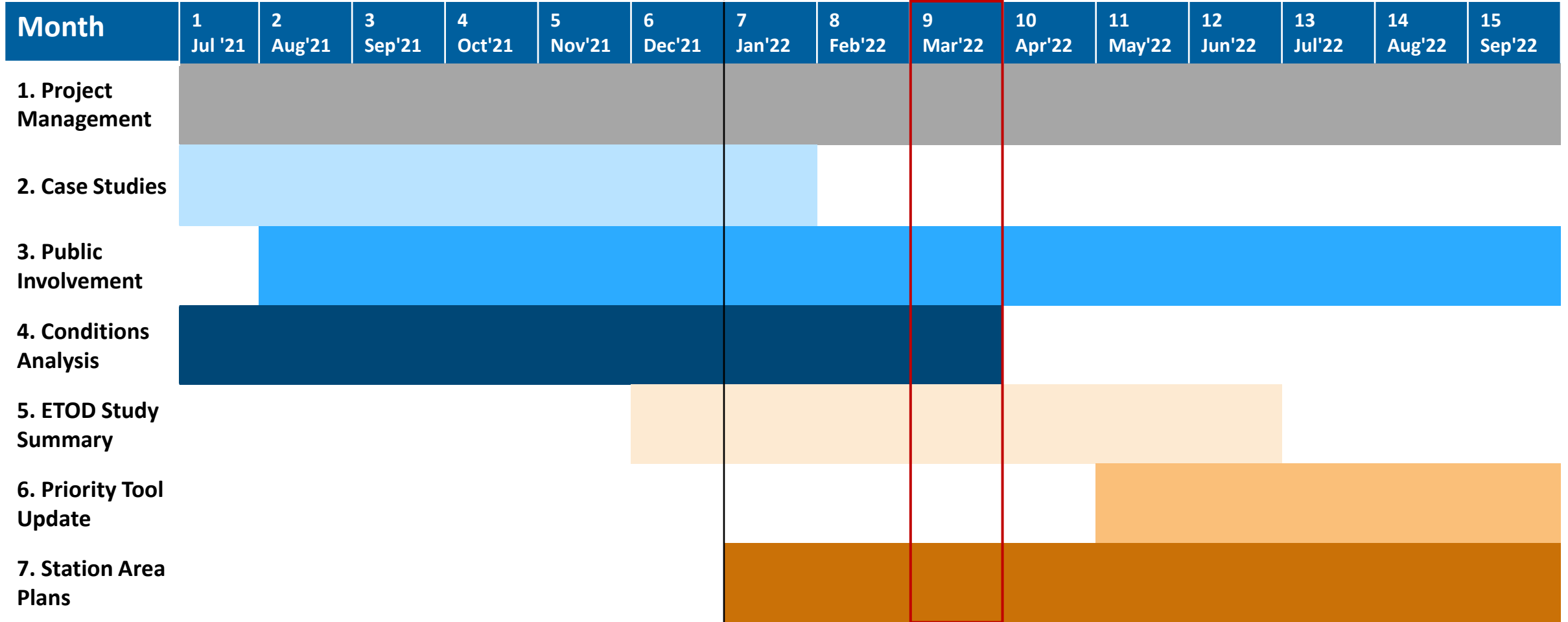
*5 of 12 Community Connectors identify as multilingual

**Other languages spoken include: Hindi, Gujarati, Vietnamese, French, Lengua de Señas Mexican (LSM), and British Sign Language (BSL)

What We Heard



Overall Project Schedule



Key Dates – Spring and Summer 2022

Task 2 | Case Studies PDF – Completed

Task 3 | Public Engagement – Phase 2 starting April 2022

Task 4 | Conditions Analysis – March 2022

Task 5 | ETOD Study Summary Workshop – April 2022

Task 7 | Station Area Plans (prototype) – Ongoing

Stay in Contact

E-mail: etod@capmetro.org

Project website

<https://projectconnect.com/projects/etod>

