

CapMetro

CapMetro Bikeshare

July 2025

Agenda

- Bikeshare Partnership
- System overview
- Ridership
- August Fare Adjustment
- Bikeshare Expansion
 - Ridership Propensity
 - Market Typologies
 - 2025 Expansion Station Locations
- Next Steps



Bikeshare Partnership

- 3-year interlocal agreement between the City and CapMetro.
 - Both parties contribute financially
 - Both parties will create monthly and annual reports

CapMetro

- Ensure grant-funded activities meet the terms of 3rd Party Agreements.
- Conduct branding, marketing, advertising
- Manage Bikeshare vendor contract, software, and associated agreements
- Operations, maintenance, and planning

City of Austin

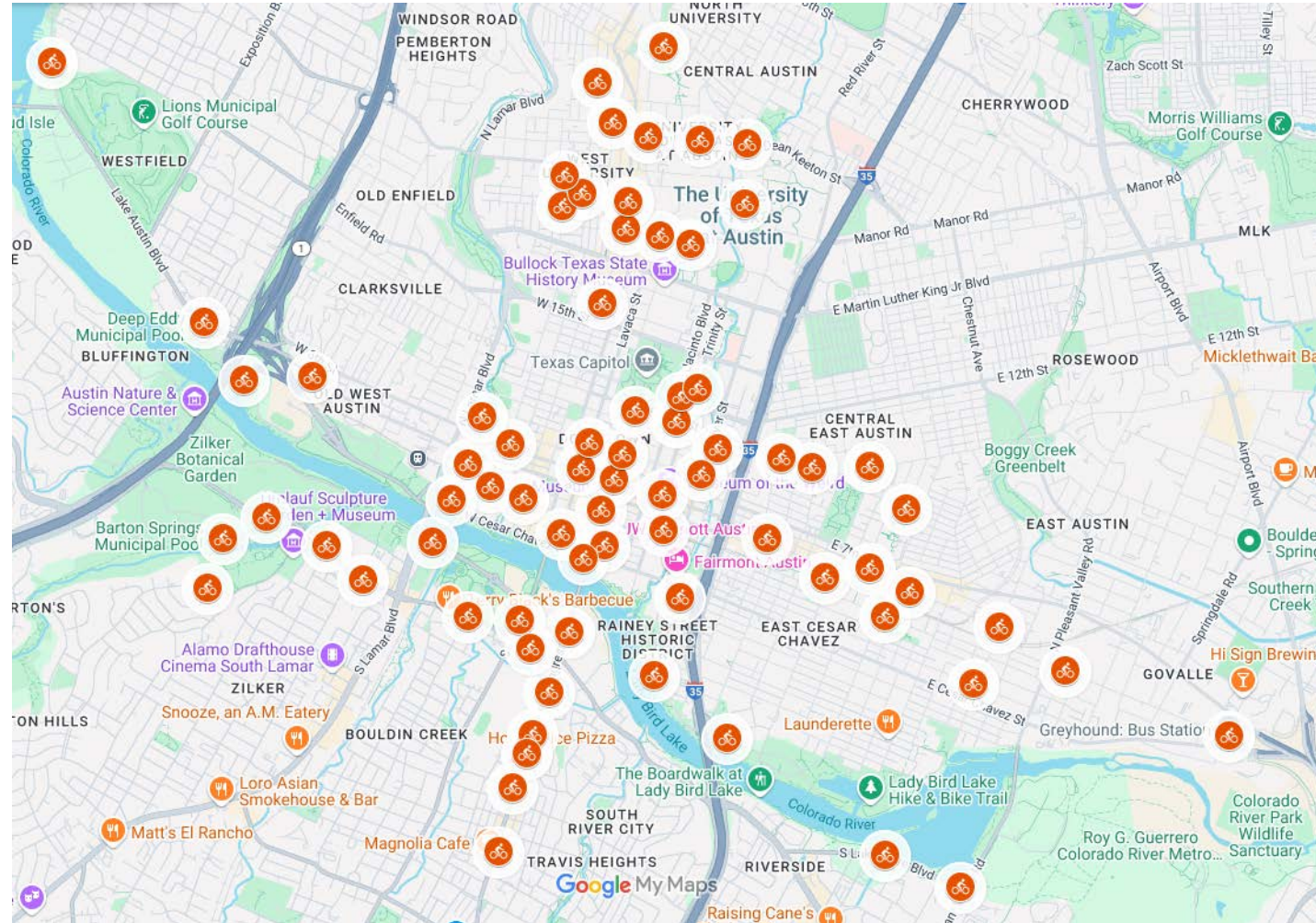
- Reimburse CapMetro for grant-related expenses
- Own program equipment and inventory
- Design, permitting, and construction*
- Ensure access to bikeshare during special events

*CapMetro responsible for design, permitting, construction of Bikeshare pads within their ROW or when constructing in coordination with another CapMetro capital project.

System Overview

- 100% e-bike fleet (475 bikes)
 - All new, all-electric fleet installed in 2024
- 73 existing stations
- 1 electrified station (station charges bikes)
 - Construction of 1 additional electrified station underway
- Access the program via the CapMetro Bikeshare or the Transit app

Map of Existing Bikeshare Stations



Ridership



Ridership has been increasing by 10% each month.



Highest ride day: Wednesday, March 12, 2025,
during SXSW (with 2003 trips)



Top performing station: Perry-Castañeda Library,
with more than 30k trips this year.



Today, top-performing stations are in West Campus
and top users of the system are UT students.



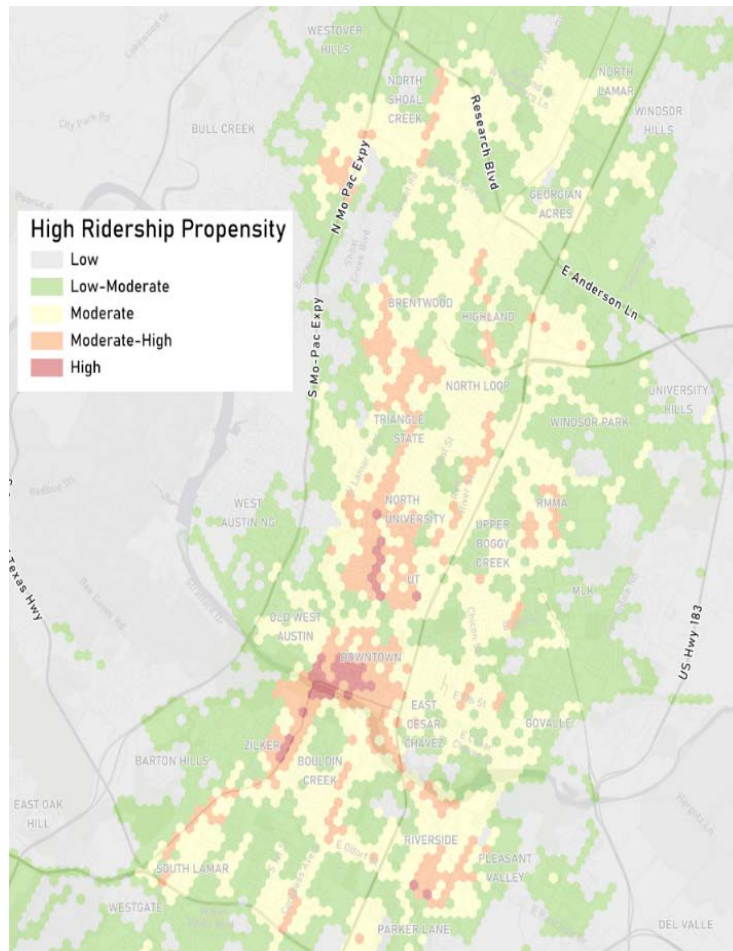
August Fare Adjustment

Price	Pay-as-you-ride	1-Day Pass	31-Day Pass	Annual Pass	Student (18 & Over) Discount
Current	\$1.09 + \$0.23/min	\$12.99 (60 mins) + 4.33 per 30 min	\$11 (60 mins) + \$4.33 per 30 min	\$86.60 (60 mins) + \$4.33 per 30 min	\$12 (60 mins) + \$4.33 per 30 min
New (August 1 st)	\$2.50 + \$0.25/min	\$10 (30 mins) + \$0.25/min	\$25 (30 mins) + \$0.25/min	\$150 (30 mins) + \$0.25/min	50% off Annual Pass

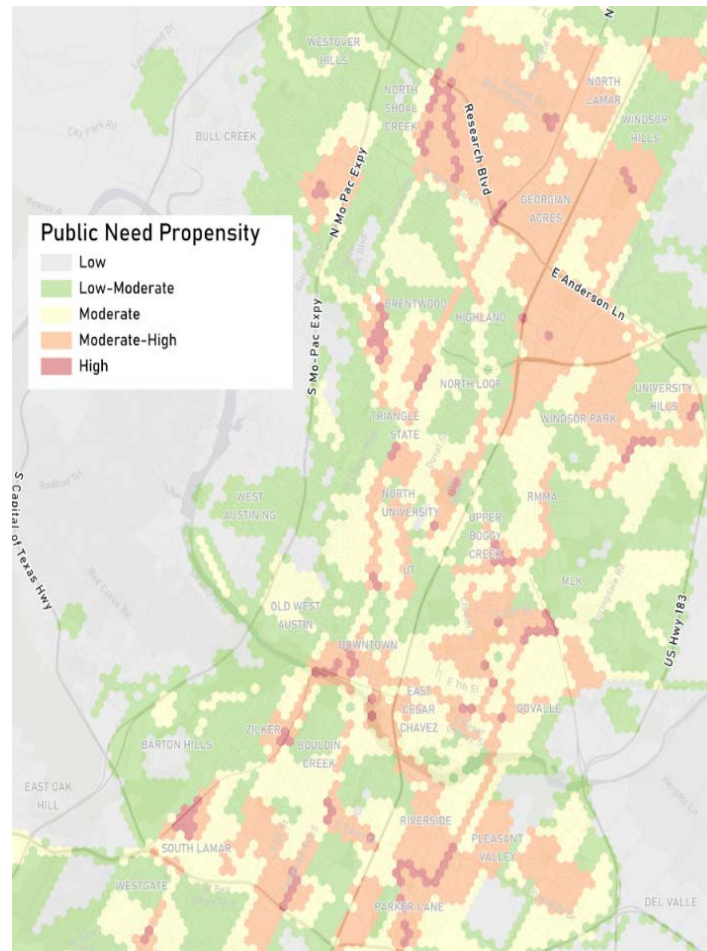
- (Mins) refers to the included time per ride before assessing Overage Fees
- Simplified the overage fees (\$4.33 per 30 min vs. \$0.25/min)
- Made 1-Day and 31-Day pass logical. The 31-Day pass now costs more than the 1-Day pass.
- More closely aligned Annual Pass and Student Discount with industry best practice.

Ridership Propensity

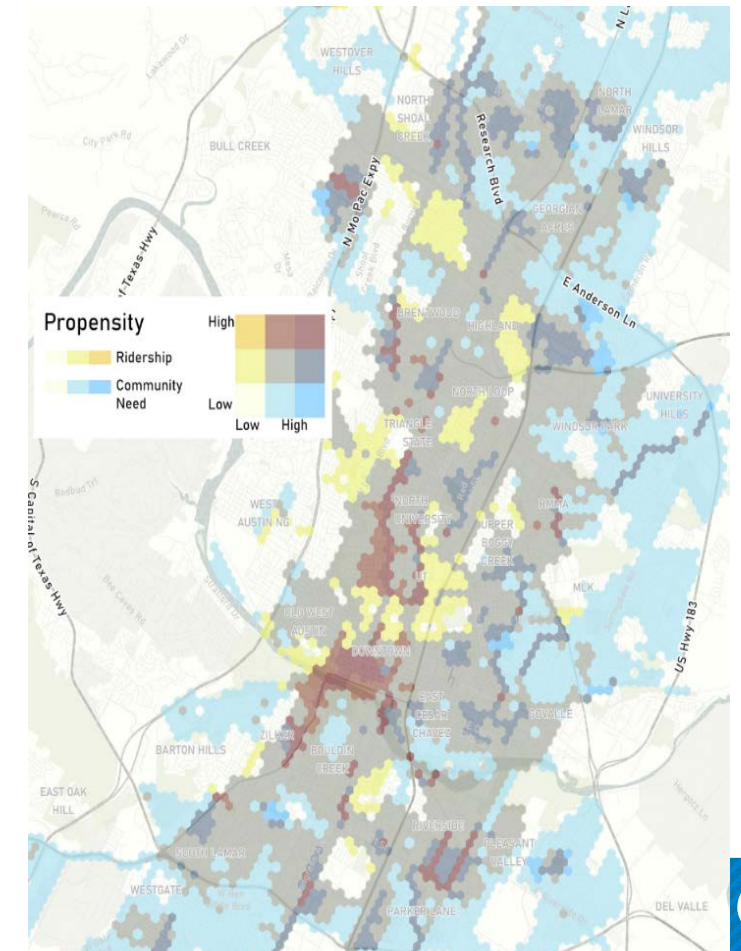
High Ridership



Public Need



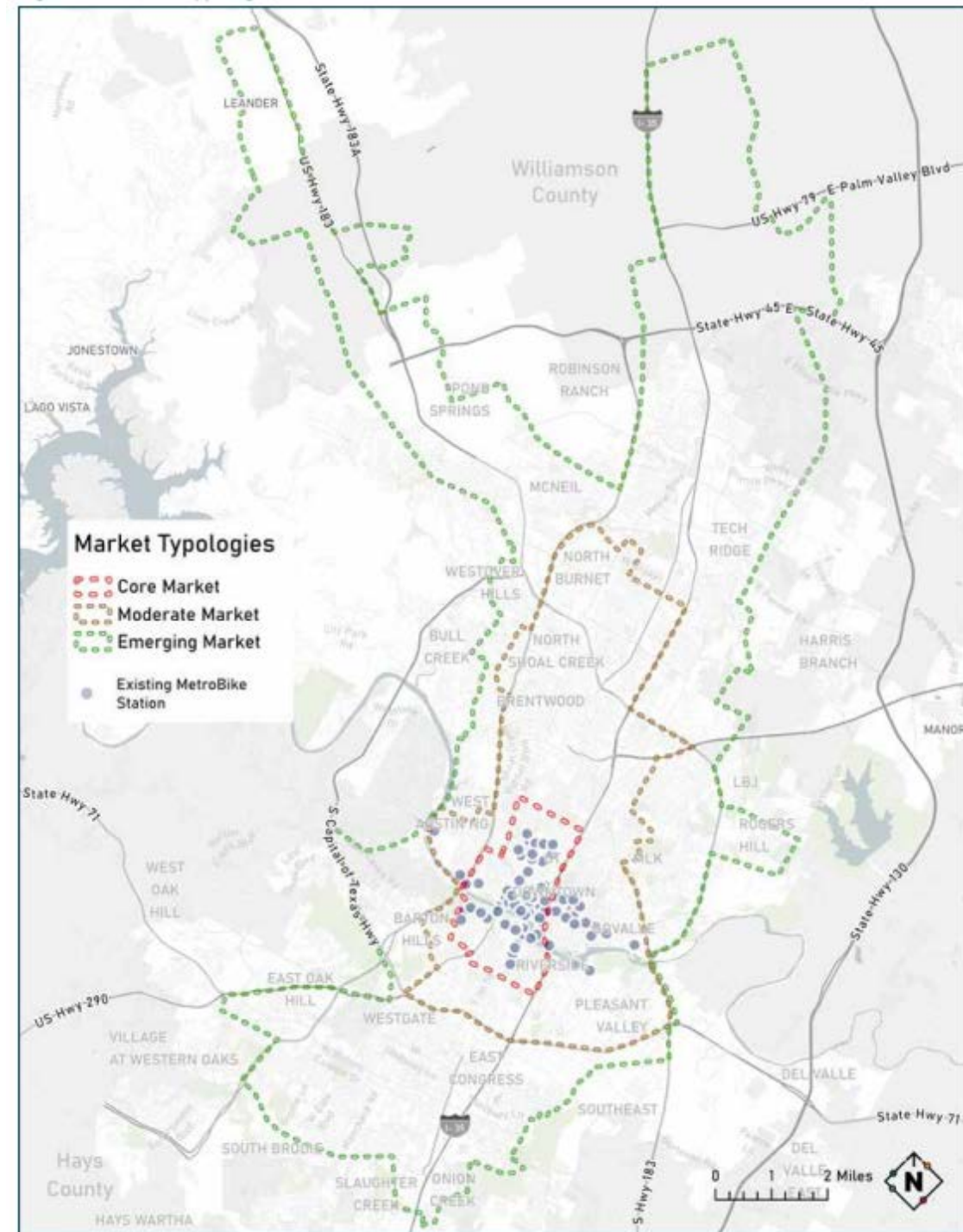
Combined Ridership + Public Need



Strategic Expansion

Expansion Must:

- Increase coverage across Austin
 - Expand throughout neighborhoods
 - Balance outward growth with core capacity
- Integrate with Project Connect and Transit Plan
 - Provide first- and last-mile option to access public transit
- Ensure sustainable operations
 - Locate Electrified Bikeshare Stations (EBS) in strategic locations to keep the system charged and enhance operational efficiency

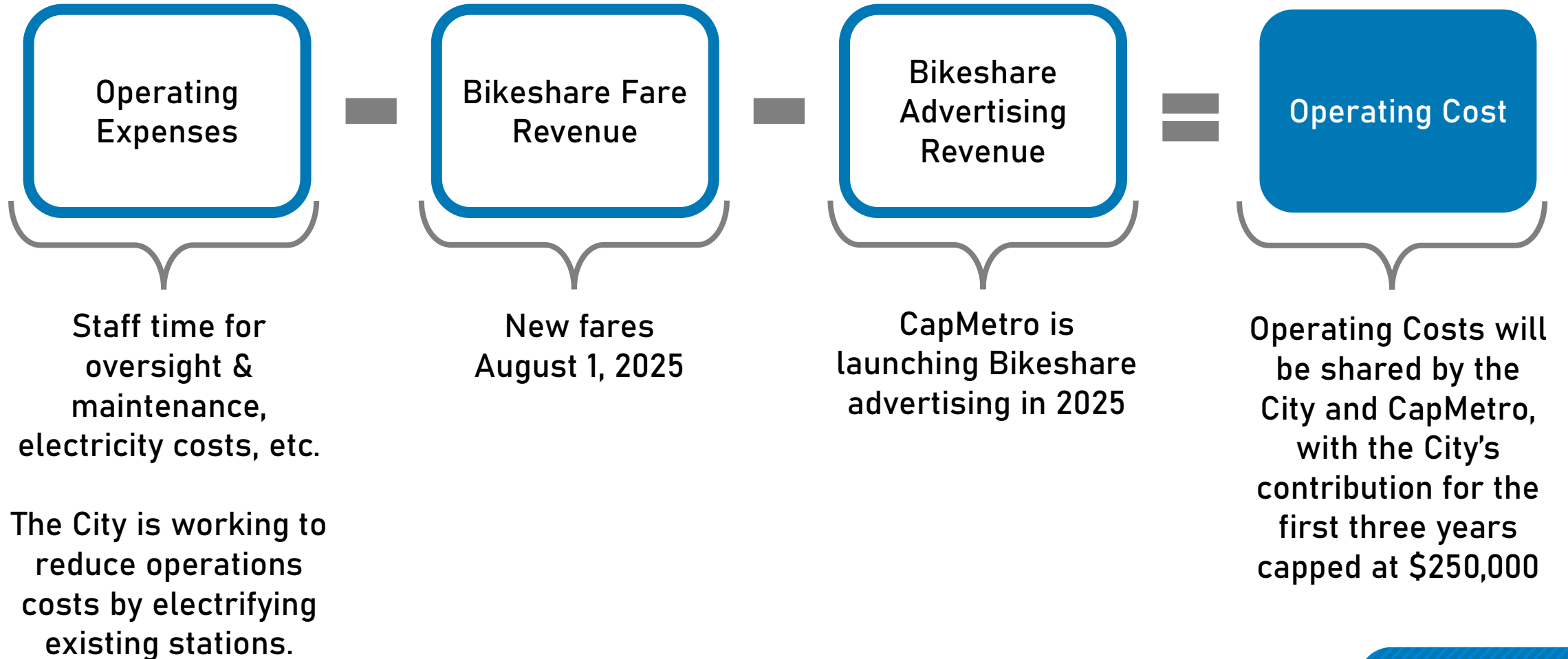


Challenges

- Sustainable operations are critical to expansion of the system.
 - Battery swaps significantly increase O&M costs compared to the old system:
 - Electrification of stations takes several months per station
 - Bikeshare at UT campus is majority of operations (90% of the trips)
 - Staff spending most of their time in the UT-area bike balancing, making stations further away more difficult to serve
- Standard details and specifications being developed.
- AE partnership critical to success.

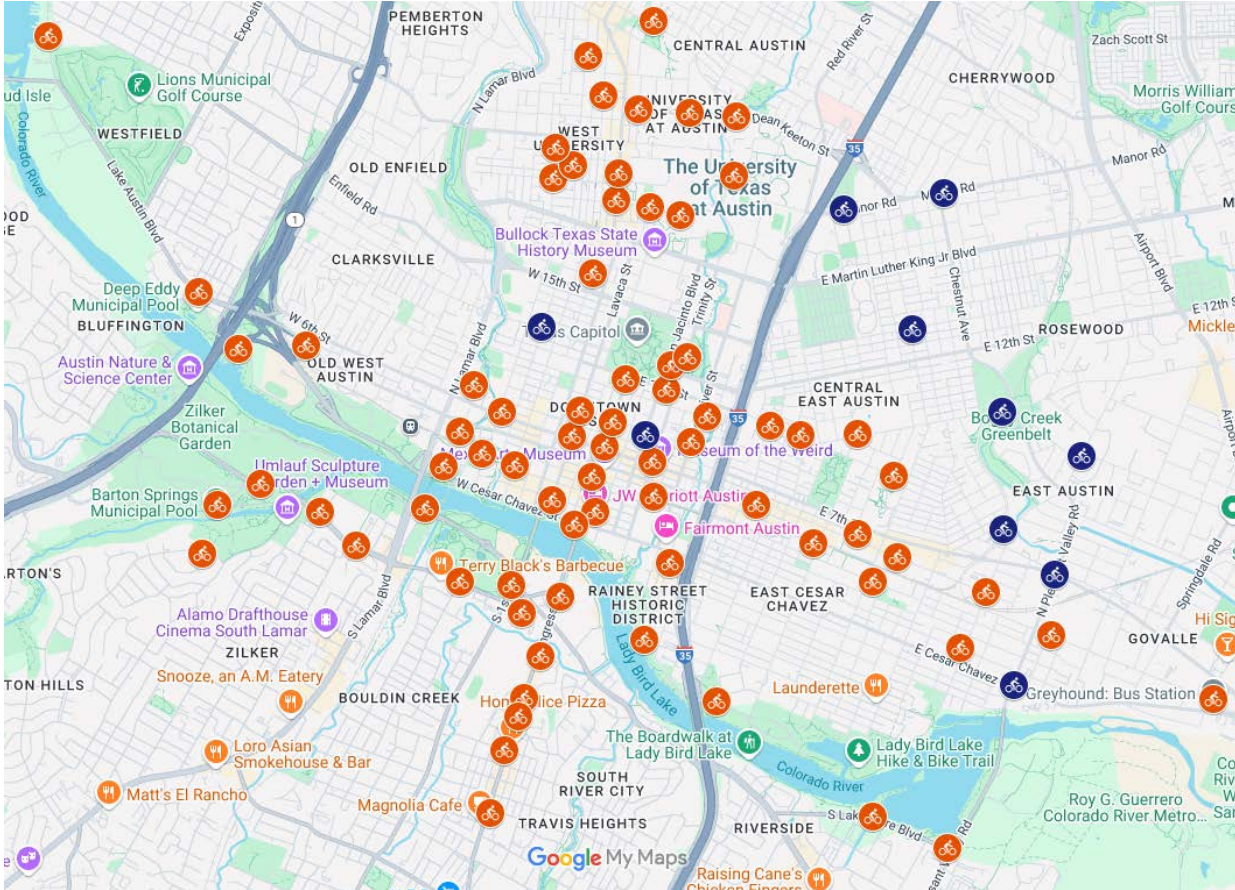


Balancing O&M Costs



2025 Expansion Station Locations

Map of **Existing** and **Upcoming** Stations



1. W 12th St at Rio Grande St
2. Manor Ave at Chestnut Ave
3. E 7th St at N Pleasant Valley Rd
4. Webberville Rd at Neal St
5. E Cesar Chavez at N Pleasant Valley Rd
6. San Jacinto Rd at E 8th St
7. Northwestern Ave at Webberville Rd
8. Rosewood Ave at Chestnut Ave
9. E 14th St at Chicon St
10. Manor Rd at Leona St

**Station locations are subject to change based on site availability*

Next Steps

- Launch Bikeshare advertising
- Design, permit, and install 10 expansion locations in 2025
- Transportation and Public Works preparing several sites for electrification for station locations in 2025 and beyond
- New fare structure to go into effect August 1
- Public ridership dashboard to launch Fall 2025
- **2028** – CapMetro & City of Austin partner to refine agreement and plan for broader expansion based on true operating costs



CapMetro

Thank you!